

Project Planning of Power Bus Systems

Description

With the **podis** PLAN project planning software you can conveniently determine your optimal power bus configuration. While you enter data, the calculation is already performed in the background.

In the graphic output, overloads and faults are color-highlighted.

Overview of applications

Automotive

- Skid conveyor technology
- Power & Free systems
- Floor conveyor technology

Intralogistics

- Driven roll conveyors
- Belt conveyors
- Chain conveyors

Airport logistics

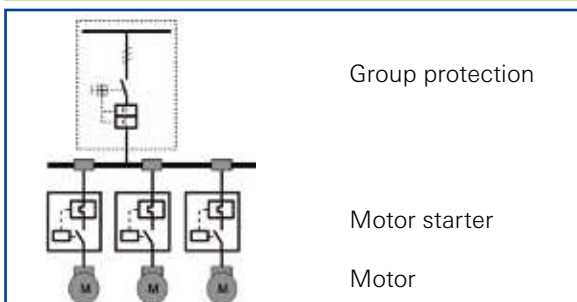
- Cargo conveyor technology
- Baggage conveyor technology

Functions

- Graphical power bus project planning
- Determination of current load, line voltage drop, short circuit current
- Appropriate selection of power feed-in
- Selection of protective devices for overload and short circuit protection
- Graph and table printouts for documentation
- Online help function

Convincing advantages

- Fast and easy power bus project planning
- No time-consuming product data maintenance
- VDE-compliant selection of predefined protective devices
- Graph and table documentation
- Online help/manual
- Project explorer for structured data management
- 15 days free trial



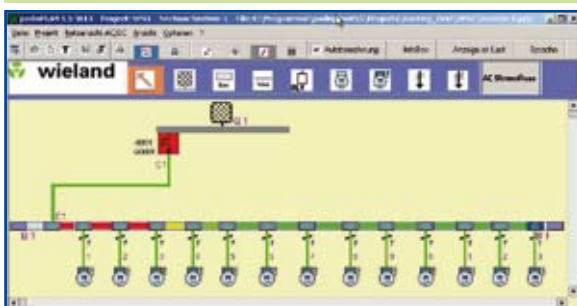
Operating principle of protective devices

The group protective device protects

– the power bus against overloading and short circuiting

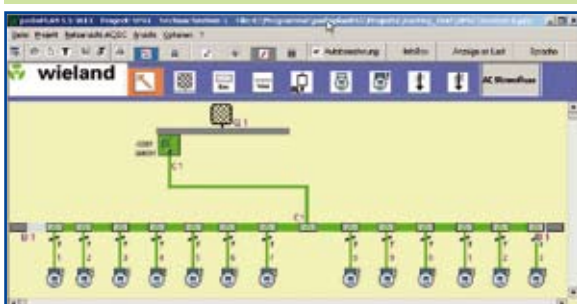
– the stubs and motors against short circuiting

The motor starters protect the stubs and motors against overloading



Initial situation

First the loads are connected to the power bus; electrically relevant values such as voltage drop, current load and short circuit current are calculated in the background.



After optimization with **podis** PLAN

The power bus is optimized step by step through optimal configuration of feed-in, dimensioning of the power bus line, and set-up of protective devices.



Headquarters:
Wieland Electric GmbH
Brennerstraße 10 – 14
D-96052 Bamberg

Sales- and
Marketing Center:
Wieland Electric GmbH
Benzstraße 9
D-96052 Bamberg

Phone +49 (951) 93 24-0
Fax +49 (951) 93 24-198
www.wieland-electric.com
www.gesis.com
www.podis.de
info@wieland-electric.com

Industrial technology

Solutions for the control cabinet

- DIN rail terminal blocks
 - Screw, spring clamp or IDC connection technology
 - Wire cross sections up to 240mm²
 - Numerous special functions
 - Software solutions interfacing to CAE systems
- Safety
 - Safety sensors
 - Safety relays
 - Modular safety systems with fieldbus link
- PLC and fieldbus components
 - Standard applications in IP20
 - Increased environmental conditions with railroad and ship approvals
- Interface
 - Coupling relays, semiconductor switches
 - Measuring and monitoring relays
 - Timer and switching relays
 - Analog modules
 - Passive interfaces
 - Power supply units
 - Overvoltage protection

Solutions for field applications

- Remote automation technology
 - Power distribution
 - Fieldbus interfaces and motor starters
- Connectors for industrial applications
 - Square and round connectors
 - Aluminum or plastic housings
 - Degree of protection up to IP68
 - Current-carrying capacity up to 100A
 - Connectors for hazardous areas
 - Modular, application specific technology

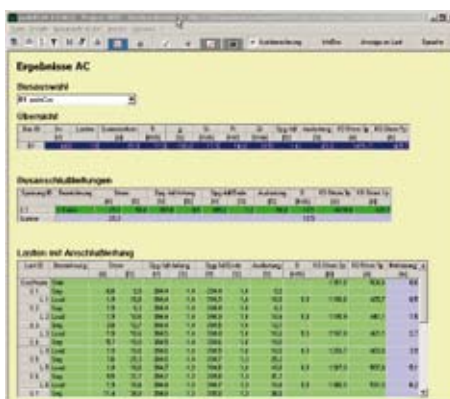
PC board terminals and connectors

- Screw or spring clamp connection technology
- Spacings: 3.5 mm to 10.16 mm
- Reflow or wave soldering process

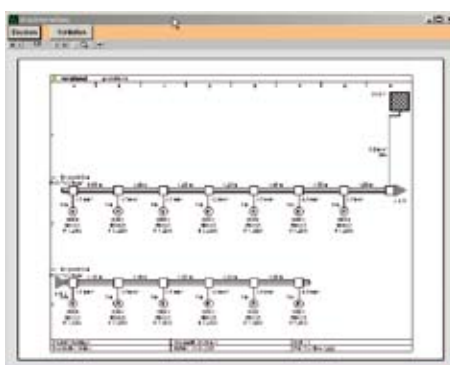
Building and installation technology

- Building installation systems
 - Main power supply connectors IP20/IP65 ... IP68
 - Bus connectors
 - Combined connectors
 - Low-voltage connectors
 - Power distribution system with flat cables
 - Distribution systems
 - Bus systems in KNX, LON and radio technology
 - DIN rail terminal blocks for electrical installations
 - Overvoltage protection

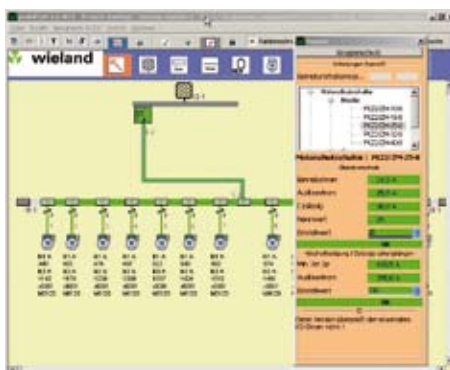
Description	Type	Part No.	Std. Pack
podis PLAN 5.5 Project planning software	podis PLAN 5.5	95.502.1010.0	1



Tabular display



Graphic printout



Selection and set-up of the protective device and the loads